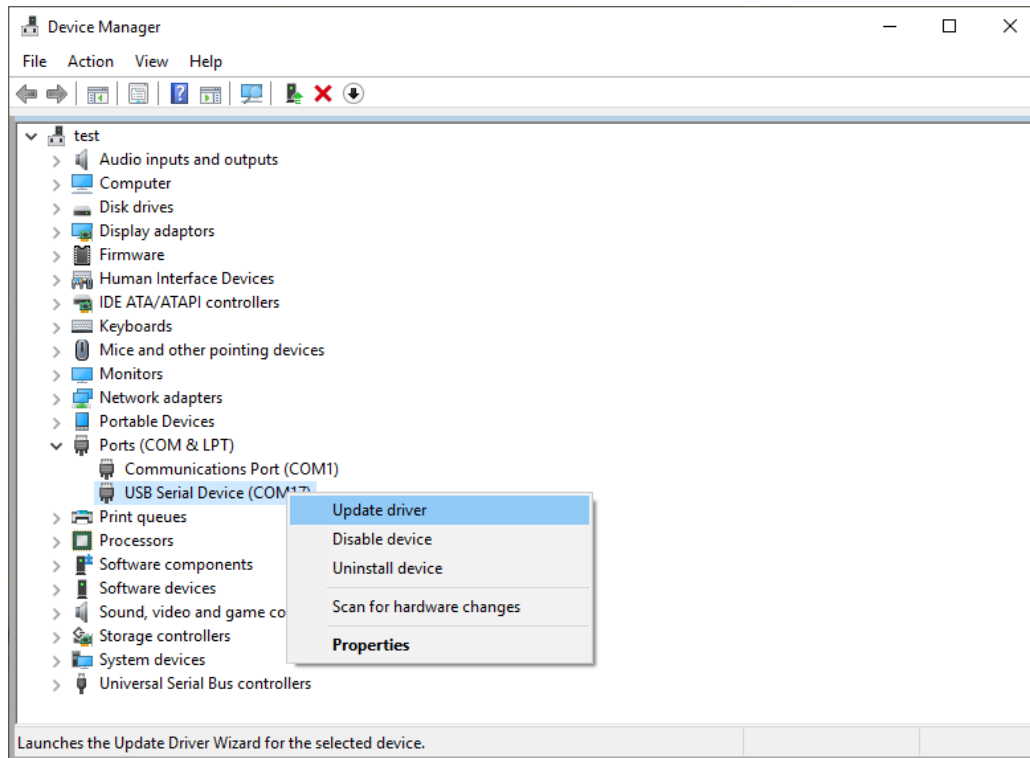
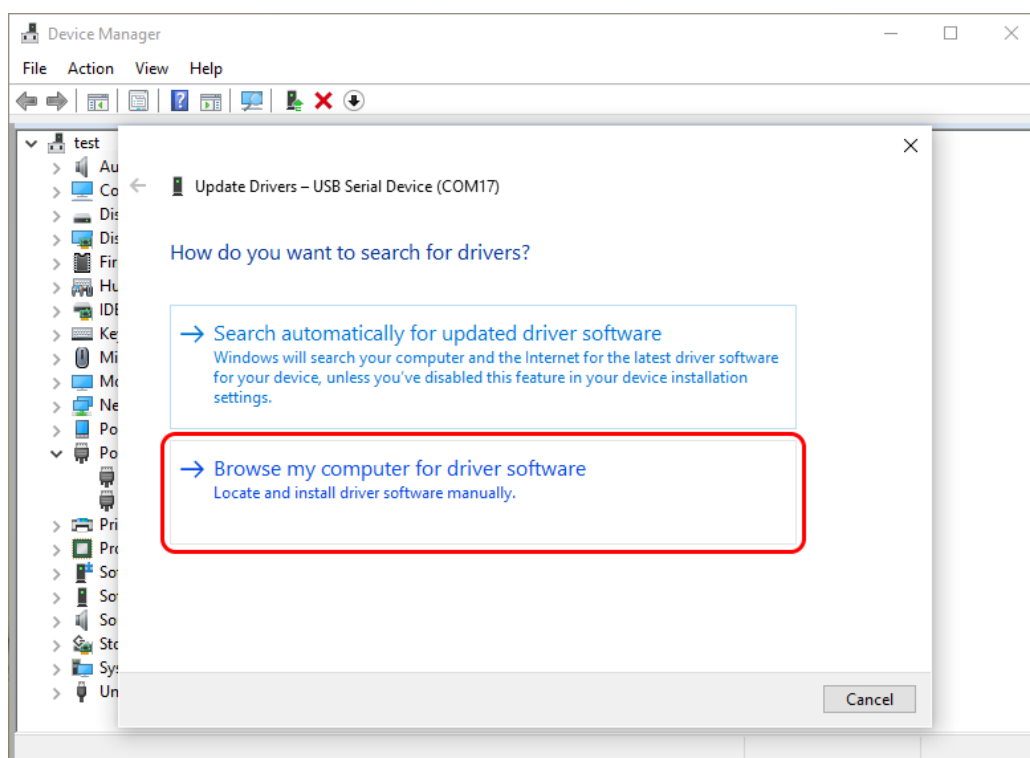


If driver for Spectrum Compact unit was installed but it is not working properly, try updating the driver manually.

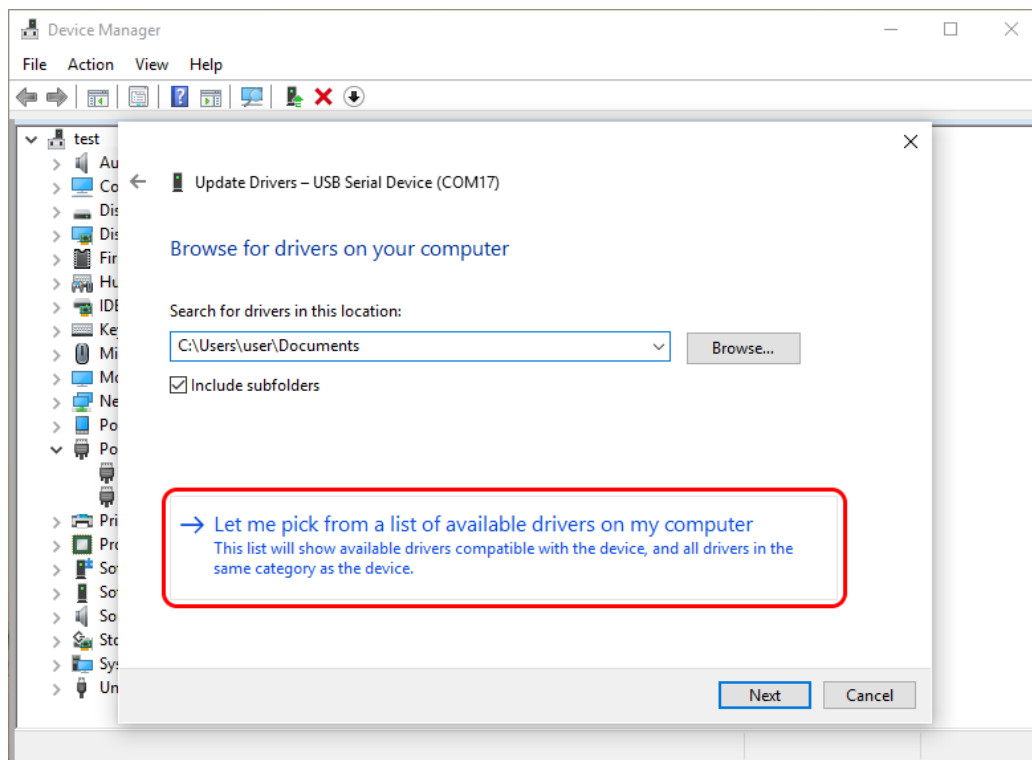
1. Connect the Spectrum Compact unit to the PC.
2. Open device manager and under section "Ports (COM & LPT)" locate the COM port corresponding to the Spectrum Compact. Right click on it and select "Update driver":



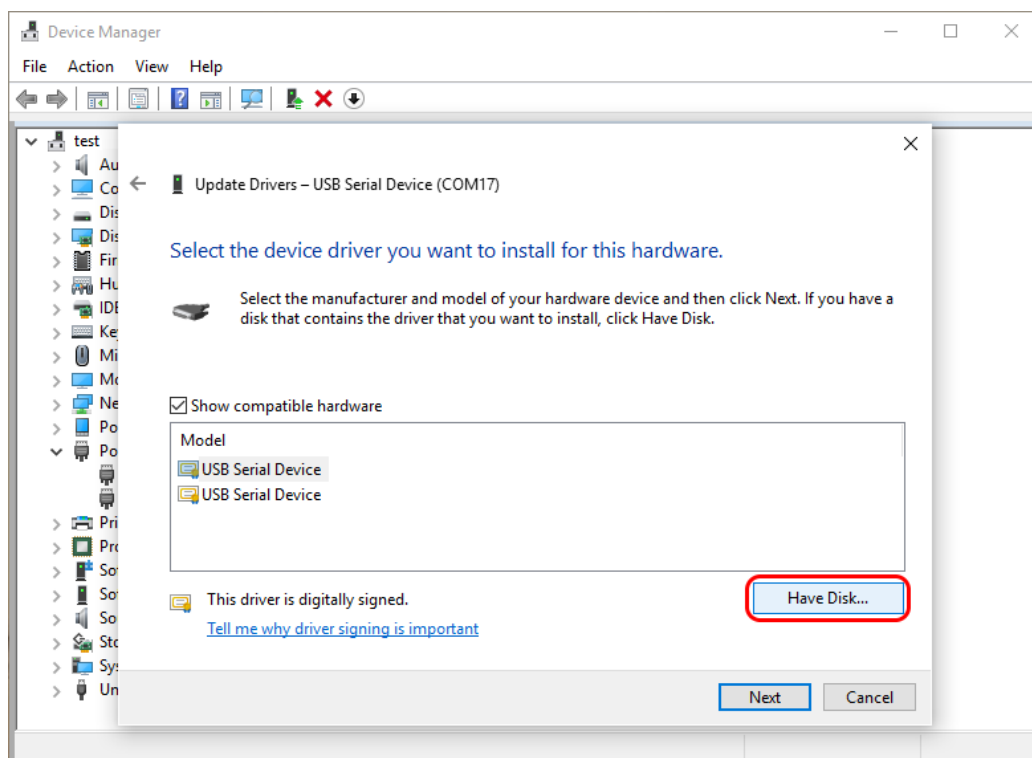
3. In the "Update Drivers" window, select the second option "Browse my computer for driver software":



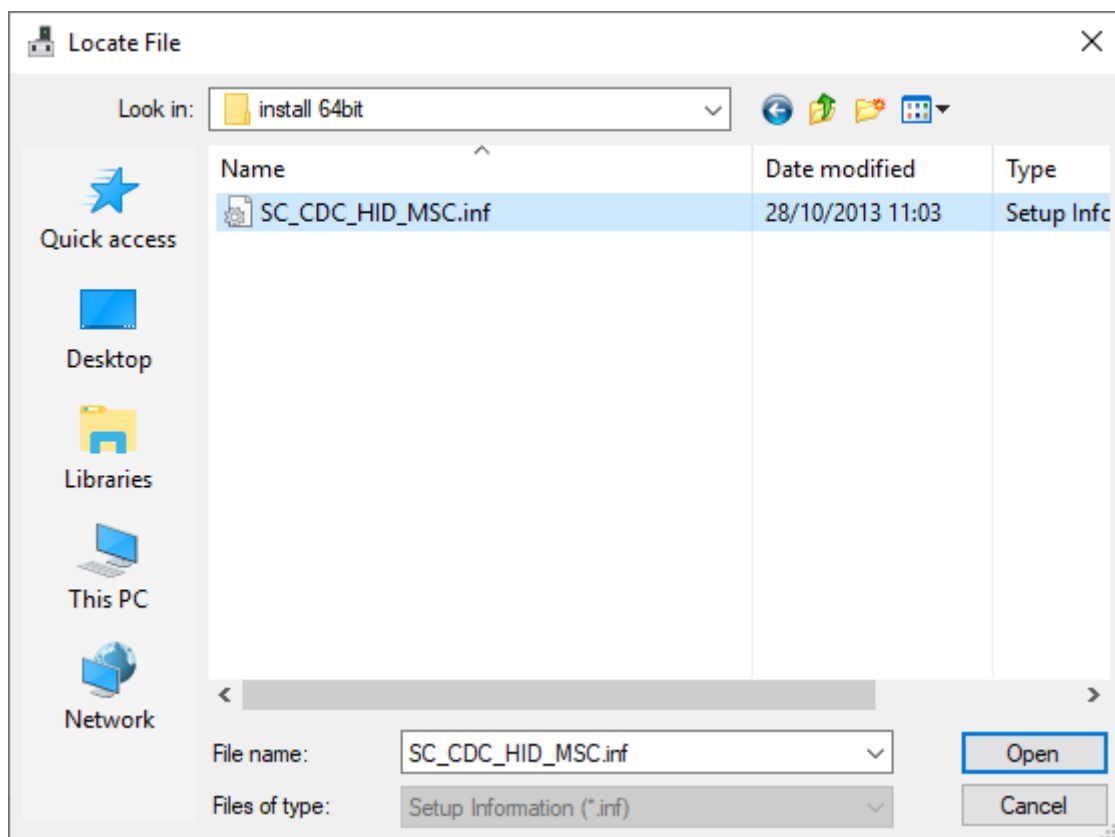
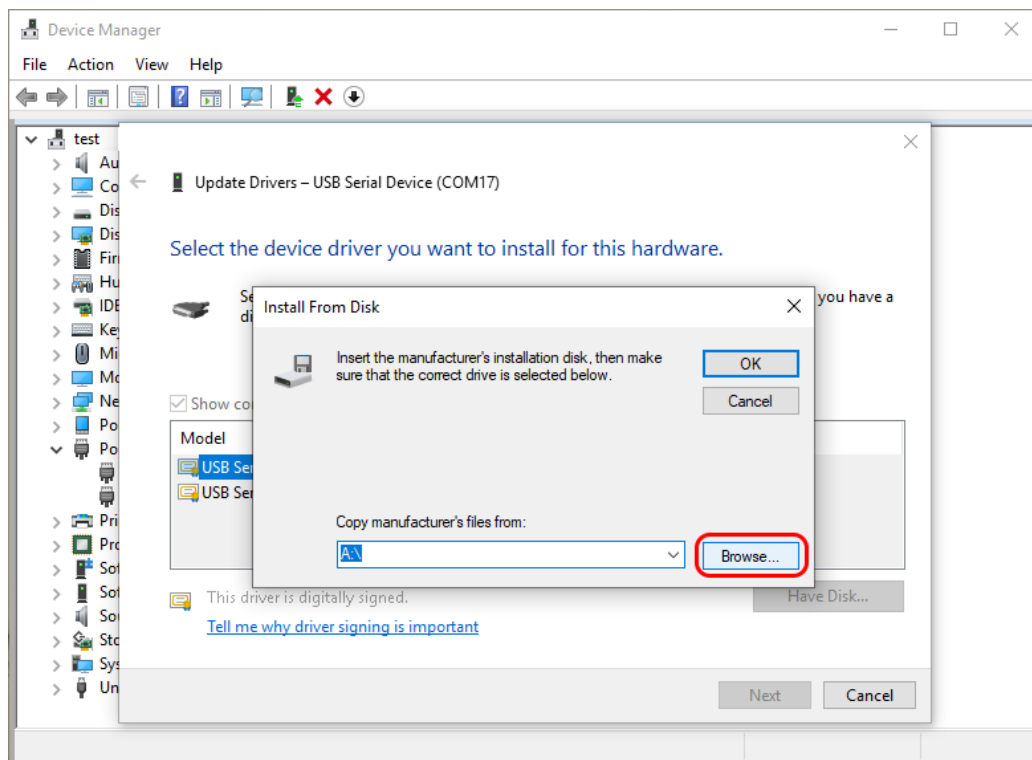
4. In the next window select the second option "Let me pick from a list of available drivers on my computer":



5. Select "Have Disk":

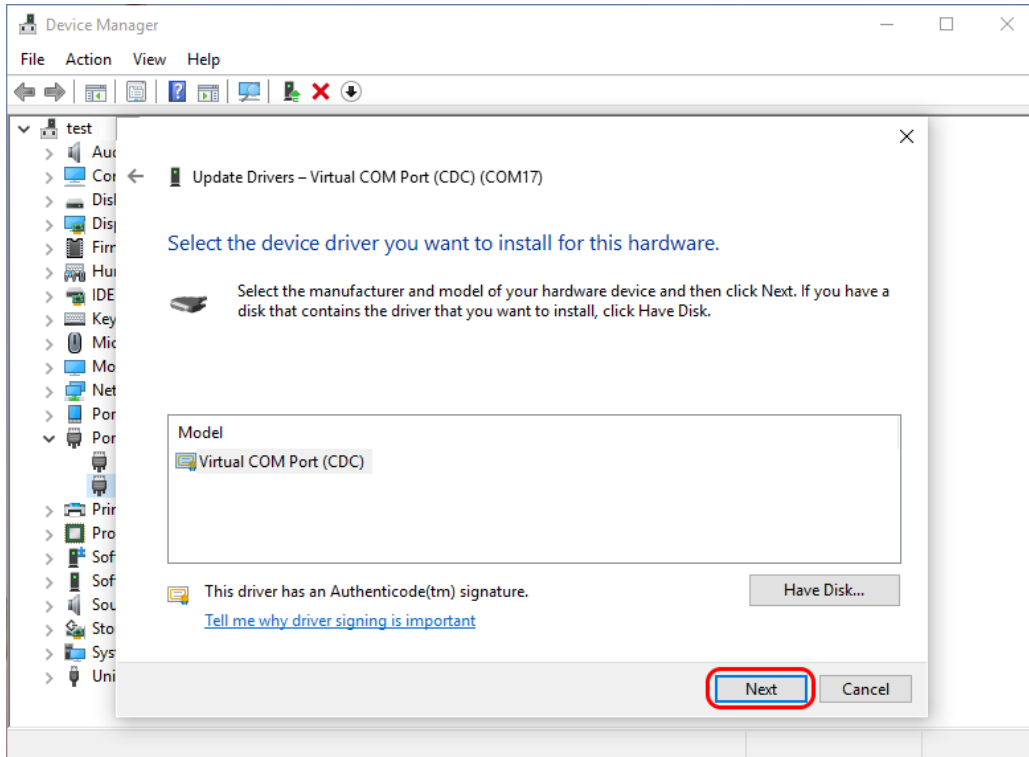


6. Now select "Browse", locate and open the driver provided (32bit or 64bit version according to your Windows installation):



7. Select "OK" in the "Install From Disk" window.

8. Select "Next" in the "Update Drivers" window.



(If there is a "Update Driver Warning", choose "Yes".)

9. The driver should now be successfully updated.

